

Contour Cabinet Pull Handle

V4446 96-SC



Heritage Brass Cabinet Pull Contour Design 96mm CTC Satin Chrome finish

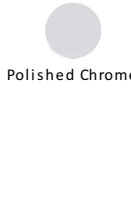
Material:
Solid Brass

Finish:
Satin Chrome

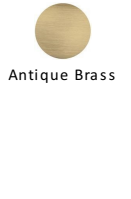
Available Finishes



Polished Brass



Polished Chrome



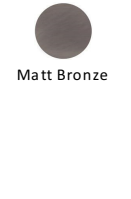
Antique Brass



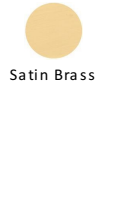
Satin Chrome



Satin Nickel



Matt Bronze



Satin Brass

Product Dimensions (All dimensions are in millimeters unless otherwise indicated)

Length	134	CTC	96	Projection	30.5	Maximum Diameter	11
Base	8						

About the Finish

Satin Chrome

The brush marks of satin chrome will appeal to those who favour an industrial yet contemporary chrome finish. Satin Chrome Finish is also less prone to finger marks than polished chrome.

Useful Information

- If replacing an existing Cabinet Pull it may be simpler to install if you select a pull which matches the existing centre to centre of the screw holes

Box Contains

- 1 x Cabinet Pull
- All fixing screws and fasteners

+971 (0) 43559265

www.heritagebrass-uae.com

office@heritagebrass-uae.com

Property of M Marcus Ltd. ©