

## Henley Traditional Cabinet Pull Handle

C3960 102-SN



Heritage Brass Cabinet Pull Henley Traditional Design 102mm CTC Satin Nickel Finish

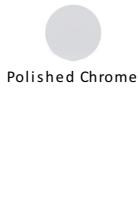
**Material:**  
Solid Brass

**Finish:**  
Satin Nickel

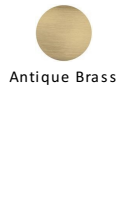
### Available Finishes



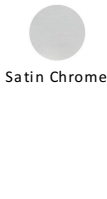
Polished Brass



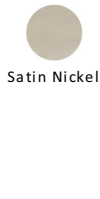
Polished Chrome



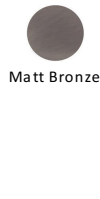
Antique Brass



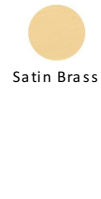
Satin Chrome



Satin Nickel



Matt Bronze



Satin Brass

### Available Sizes



102 mm



152 mm



203 mm

### Product Dimensions (All dimensions are in millimeters unless otherwise indicated)

Length	117	CTC	102	Projection	41	Base	15
--------	-----	-----	-----	------------	----	------	----

### About the Finish

#### Satin Nickel

With its honeyed grey tone created by brushed nickel plating on brass, this finish closely matches Stainless Steel but offers a warm and subtle alternative which is popular in traditional and modern décors.

### Useful Information

- If replacing an existing Cabinet Pull it may be simpler to install if you select a pull which matches the existing centre to centre of the screw holes

### Box Contains

- 1 x Cabinet Pull
- All fixing screws and fasteners

+971 (0) 43559265

[www.heritagebrass-uae.com](http://www.heritagebrass-uae.com)

[office@heritagebrass-uae.com](mailto:office@heritagebrass-uae.com)

Property of M Marcus Ltd. ©