

Industrial Cabinet Pull Handle

C2480 192-SC



Heritage Brass Cabinet Pull Industrial Design 192mm CTC Satin Chrome Finish

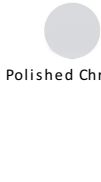
Material:
Solid Brass

Finish:
Satin Chrome

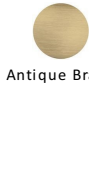
Available Finishes



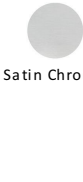
Polished Brass



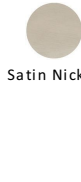
Polished Chrome



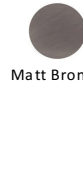
Antique Brass



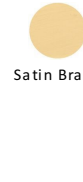
Satin Chrome



Satin Nickel



Matt Bronze



Satin Brass



Matt Black

Available Sizes



128 mm



160 mm



192 mm



256 mm

Product Dimensions (All dimensions are in millimeters unless otherwise indicated)

Length	222	CTC	192	Projection	34	Maximum Diameter	12
Base	10						

About the Finish

Satin Chrome

The brush marks of satin chrome will appeal to those who favour an industrial yet contemporary chrome finish. Satin Chrome Finish is also less prone to finger marks than polished chrome.

Useful Information

- If replacing an existing Cabinet Pull it may be simpler to install if you select a pull which matches the existing centre to centre of the screw holes

Box Contains

- 1 x Cabinet Pull
- All fixing screws and fasteners

+971 (0) 43559265

www.heritagebrass-uae.com

office@heritagebrass-uae.com

Property of M Marcus Ltd. ©